

## **Ekonomska skola Vukovar**

Date: 14.09.2020

Operator: Nova-lux d.o.o.



Operator Nova-lux d.o.o.  
Telephone  
Fax e-  
Mail

## Table of contents

### Ekonomska skola Vukovar

Project Cover	1
Table of contents	2
<b>Škola_prizemlje_adm_prostor_za_skupna_predavanja</b>	
Summary	3
Luminaire parts list	4
Photometric Results	5

### Sportska\_dvorana\_elektro\_Soba

Summary	6
Luminaire parts list	7
Photometric Results	8

### Škola\_prizemlje\_adm\_opće\_spremište

Summary	9
Luminaire parts list	10
Photometric Results	11

### Škola\_prizemlje\_adm\_glavna\_el\_soba

Summary	12
Luminaire parts list	13
Photometric Results	14

### Škola\_prizemlje\_adm\_WC\_inv

Summary	15
Luminaire parts list	16
Photometric Results	17

### Škola\_1kat\_elektro\_soba

Summary	18
Luminaire parts list	19
Photometric Results	20

### Škola\_adm\_sanitarije

Summary	21
Luminaire parts list	22





Operator Nova-lux d.o.o.  
 Telephone  
 Fax e-  
 Mail

Photometric Results 23

### Škola\_1kat\_spremište\_opreme\_ozv

Summary 24

Luminaire parts list 25

Photometric Results 26

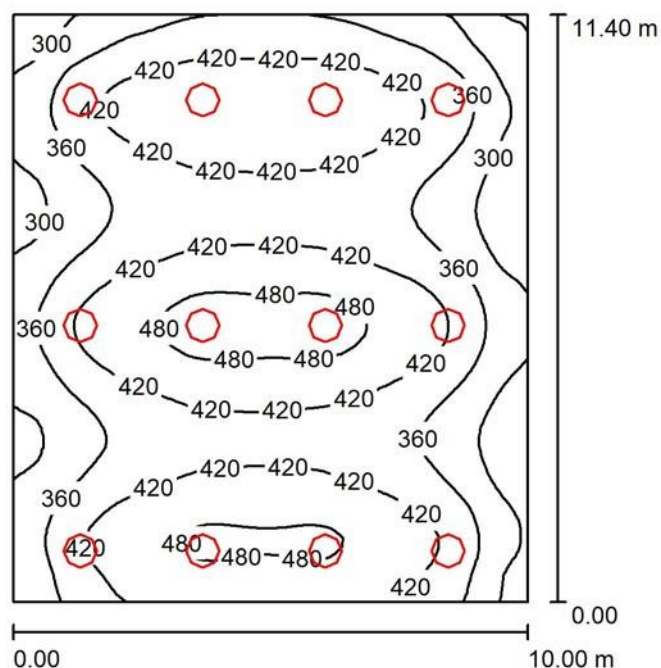
### Škola\_adm\_cb

Summary 27

Luminaire parts list 28

Photometric Results 29

### Škola\_prizemlje\_adm\_prostor\_za\_skupna\_predavanja / Summary



Height of Room: 4.100 m, Mounting Height: 2.900 m, Light loss factor: 0.80

Values in Lux, Scale 1:147

Surface	$\rho$ [%]	$E_{av}$ [lx]	$E_{min}$ [lx]	$E_{max}$ [lx]	$u0$
Workplane	/	397	235	504	0.592
Floor	20	397	229	504	0.576
Ceiling	70	82	58	96	0.710
Walls (4)	50	191	61	601	/



Operator Nova-lux d.o.o.  
 Telephone  
 Fax e-  
 Mail

**Workplane:**

Height: 0.000 m  
 Grid: 64 x 64 Points  
 Boundary Zone: 0.000 m

Illuminance Quotient (according to LG7): Walls / Working Plane: 0.481, Ceiling / Working Plane: 0.207.

**Luminaire Parts List**

No.	Pieces	Designation (Correction Factor)	□ (Luminaire) [lm]	□ (Lamps) [lm]	P [W]
[REDACTED]					
1	12	[REDACTED] LED 8400LM [REDACTED]	5836	8058	65.0
[REDACTED]					
			Total: 70026	Total: 96696	780.0

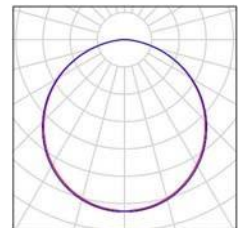
Specific connected load:  $6.84 \text{ W/m}^2 = 1.72 \text{ W/m}^2/100 \text{ lx}$  (Ground area:  $114.00 \text{ m}^2$ )

**Škola\_prizemlje\_adm\_prostor\_za\_skupna\_predavanja / Luminaire parts list**

12 Pieces

[REDACTED]  
 [REDACTED] LED 8400LM [REDACTED]  
 [REDACTED]

See our luminaire catalog  
 for an image of the  
 luminaire.



Article No.: [REDACTED]  
 Luminous flux (Luminaire): 5836 lm  
 Luminous flux (Lamps): 8058 lm  
 Luminaire Wattage: 65.0 W  
 Luminaire classification according to CIE: 100  
 CIE flux code: 47 79 96 100 72  
 Fitting: [REDACTED] (Correction Factor  
 1.000).



Operator Nova-lux d.o.o.  
Telephone  
Fax e-  
Mail

## Škola\_prizemlje\_adm\_prostor\_za\_skupna\_predavanja / Photometric Results

Total 70026

Luminous lm

Flux:

Total 780.0

Load: W

Light loss 0.80

factor:

Boundary 0.000

Zone: m

Surface	Average illuminances [lx]	Reflection factor [%]	Average luminance [cd/m²]
---------	------------------------------	--------------------------	---------------------------------

direct	indirect	total
--------	----------	-------

Workplane	316	81	397	/	/
-----------	-----	----	-----	---	---

Floor	316	81	397	20	25
-------	-----	----	-----	----	----

Ceiling	0.00	82	82	70	18
---------	------	----	----	----	----

Wall 1	156	78	234	50	37
--------	-----	----	-----	----	----

Wall 2	91	77	167	50	27
--------	----	----	-----	----	----

Wall 3	109	76	185	50	29
--------	-----	----	-----	----	----

Wall 4	104	78	182	50	29
--------	-----	----	-----	----	----

Uniformity on the working plane

u0: 0.592 (1:2)

E<sub>min</sub> / E<sub>max</sub>: 0.466 (1:2)

Illuminance Quotient (according to LG7): Walls / Working Plane: 0.481, Ceiling / Working Plane: 0.207.

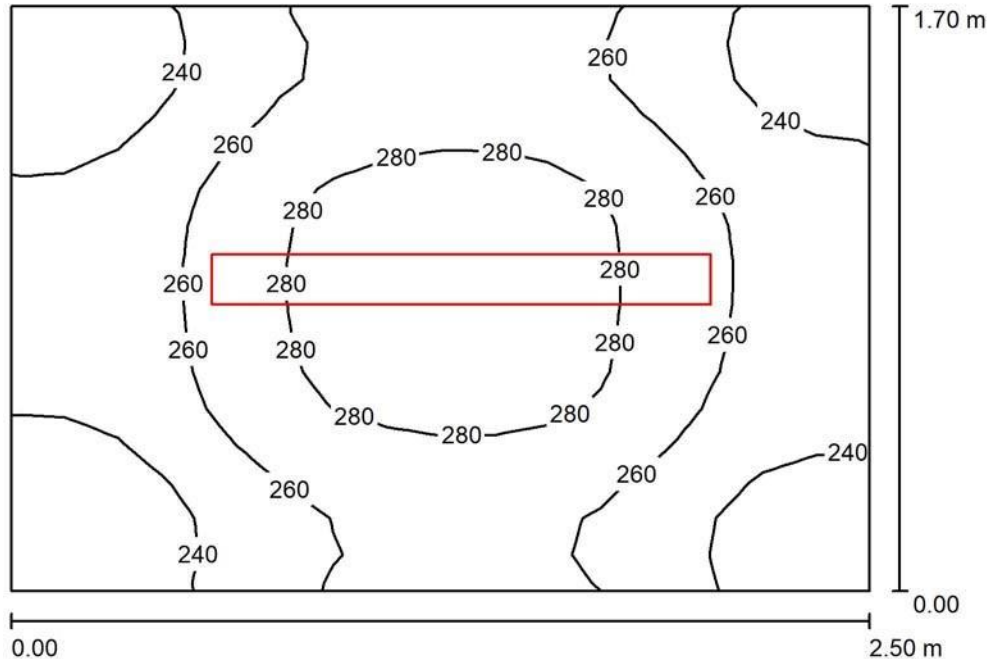
Specific connected load: 6.84 W/m² = 1.72 W/m²/100 lx (Ground area: 114.00 m²)





Operator Nova-lux d.o.o.  
 Telephone  
 Fax e-  
 Mail

## Sportska\_dvorana\_elektro\_Soba / Summary



Height of Room: 4.200 m, Mounting Height: 3.200 m, Light loss factor: 0.80

Values in Lux, Scale 1:22

Surface	$\rho$ [%]	$E_{av}$ [lx]	$E_{min}$ [lx]	$E_{max}$ [lx]	$u0$
Workplane	/	259	214	291	0.828
Floor	20	259	218	292	0.841
Ceiling	70	118	84	138	0.708
Walls (4)	50	269	90	808	/

### Workplane:

Height: 0.000 m  
 Grid: 16 x 16 Points  
 Boundary Zone: 0.000 m

Illuminance Quotient (according to LG7): Walls / Working Plane: 1.039, Ceiling / Working Plane: 0.456.

### Luminaire Parts List

No.	Pieces	Designation (Correction Factor)	$\Phi$ (Luminaire) [lm]	$\Phi$ (Lamps) [lm]	P [W]
1	1	LED, industrial, body PC with aluminium cooler, diffuser translucent PC (1.000)	7256	7250	53.0
Total: 7256			Total: 7250	53.0	

Specific connected load:  $12.47 \text{ W/m}^2 = 4.82 \text{ W/m}^2/100 \text{ lx}$  (Ground area:  $4.25 \text{ m}^2$ )



Operator Nova-lux d.o.o.  
Telephone  
Fax e-  
Mail

## Sportska\_dvorana\_elektro\_Soba / Luminaire parts list

1 Pieces

LED, industrial, body PC with aluminium translucent PC luminaire.

Article No.:

Luminous flux (Luminaire): 7256 lm

Luminous flux (Lamps): 7250 lm

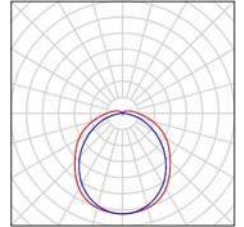
Luminaire Wattage: 53.0 W

Luminaire classification according to CIE: 93

CIE flux code: 45 74 92 93 100

Fitting: 1 x Lamp LED (Correction Factor 1.000).

See our luminaire catalog  
for an image of the cooler, diffuser





Operator Nova-lux d.o.o.  
Telephone  
Fax e-  
Mail

## Sportska\_dvorana\_elektro\_Soba / Photometric Results

Total 7256

Luminous lm

Flux:

Total 53.0

Load: W

Light loss 0.80

factor:

Boundary 0.000

Zone: m

Surface	Average illuminances [lx]		Reflection factor [%]	Average luminance [cd/m²]	
	direct	indirect			

Workplane	153	106	259	/	/
Floor	153	106	259	20	17
Ceiling	7.23	111	118	70	26
Wall 1	154	125	279	50	44
Wall 2	131	124	256	50	41
Wall 3	166	123	289	50	46
Wall 4	117	123	239	50	38

Uniformity on the working plane

u0: 0.828 (1:1)

E<sub>min</sub> / E<sub>max</sub>: 0.736 (1:1)

Illuminance Quotient (according to LG7): Walls / Working Plane: 1.039, Ceiling / Working Plane: 0.456.

Specific connected load: 12.47 W/m² = 4.82 W/m²/100 lx (Ground area: 4.25 m²)

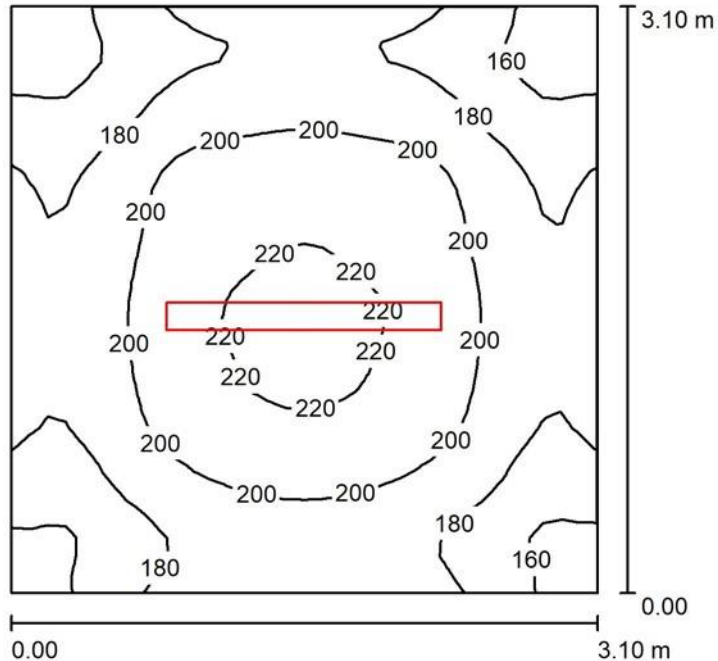






Operator Nova-lux d.o.o.  
 Telephone  
 Fax e-  
 Mail

## Škola\_prizemlje\_adm\_opće\_spremište / Summary



Height of Room: 3.600 m, Mounting Height: 3.600 m, Light loss factor: 0.80

Values in Lux, Scale 1:40

Surface	$\rho$ [%]	$E_{av}$ [lx]	$E_{min}$ [lx]	$E_{max}$ [lx]	$u0$
Workplane	/	191	145	223	0.761
Floor	20	191	148	223	0.774
Ceiling	70	127	67	611	0.526
Walls (4)	50	177	88	333	/

### Workplane:

Height: 0.000 m  
 Grid: 32 x 32 Points  
 Boundary Zone: 0.000 m

Illuminance Quotient (according to LG7): Walls / Working Plane: 0.921, Ceiling / Working Plane: 0.660.

### Luminaire Parts List

No.	Pieces	Designation (Correction Factor)	$\Phi$ (Luminaire) [lm]	$\Phi$ (Lamps) [lm]	P [W]
1	1	LED, industrial, body PC with aluminium cooler, diffuser translucent PC (1.000)	7256	7250	53.0
Total: 7256			Total: 7256	Total: 7250	53.0

Specific connected load:  $5.52 \text{ W/m}^2 = 2.89 \text{ W/m}^2 / 100 \text{ lx}$  (Ground area:  $9.61 \text{ m}^2$ )



Operator Nova-lux d.o.o.  
Telephone  
Fax e-  
Mail

## Škola\_prizemlje\_adm\_opće\_spremište / Luminaire parts list

1 Pieces

LED, industrial, body PC with aluminium translucent PC luminaire.

Article No.:

Luminous flux (Luminaire): 7256 lm

Luminous flux (Lamps): 7250 lm

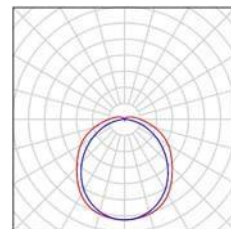
Luminaire Wattage: 53.0 W

Luminaire classification according to CIE: 93

CIE flux code: 45 74 92 93 100

Fitting: 1 x Lamp LED (Correction Factor 1.000).

See our luminaire catalog  
for an image of the cooler, diffuser





Operator Nova-lux d.o.o.  
 Telephone  
 Fax e-  
 Mail

## Škola\_prizemlje\_adm\_opće\_spremište / Photometric Results

Total 7256

Luminous lm

Flux:

Total 53.0

Load: W

Light loss 0.80

factor:

Boundary 0.000

Zone: m

Surface	Average illuminances [lx]		Reflection factor [%]	Average luminance [cd/m²]	
	direct	indirect			

Workplane	112	79	191	/	/
Floor	112	79	191	20	12
Ceiling	40	88	127	70	28
Wall 1	109	79	188	50	30
Wall 2	92	80	172	50	27
Wall 3	98	78	176	50	28
Wall 4	92	80	172	50	27

Uniformity on the working plane

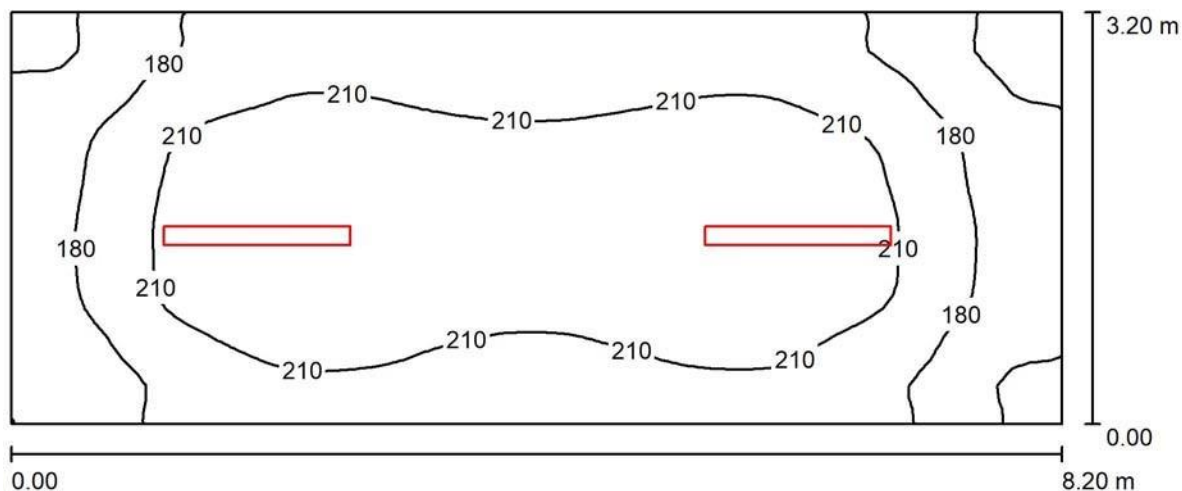
u0: 0.761 (1:1)

E<sub>min</sub> / E<sub>max</sub>: 0.650 (1:2)

Illuminance Quotient (according to LG7): Walls / Working Plane: 0.921, Ceiling / Working Plane: 0.660.

Specific connected load: 5.52 W/m² = 2.89 W/m²/100 lx (Ground area: 9.61 m²)

## Škola\_prizemlje\_adm\_glavna\_el\_soba / Summary





Operator Nova-lux d.o.o.  
Telephone  
Fax e-  
Mail

Height of Room: 3.650 m, Mounting Height: 3.650 m, Light loss factor: 0.80

Values in Lux, Scale 1:59

Surface	□ [%]	E <sub>av</sub> [lx]	E <sub>min</sub> [lx]	E <sub>max</sub> [lx]	u0
Workplane	/	200	133	237	0.663
Floor	20	200	132	236	0.659
Ceiling	70	99	51	593	0.513
Walls (4)	50	158	85	320	/

### Workplane:

Height: 0.000 m  
Grid: 64 x 32 Points  
Boundary Zone: 0.000 m

Illuminance Quotient (according to LG7): Walls / Working Plane: 0.789, Ceiling / Working Plane: 0.495.

### Luminaire Parts List

No.	Pieces	Designation (Correction Factor)	□ (Luminaire) [lm]	□ (Lamps) [lm]	P [W]
1	2	LED, industrial, body PC with aluminium cooler, diffuser translucent PC (1.000)	7256	7250	53.0
			Total: 14511	Total: 14500	106.0

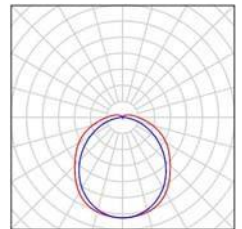
Specific connected load:  $4.04 \text{ W/m}^2 = 2.02 \text{ W/m}^2/100 \text{ lx}$  (Ground area:  $26.24 \text{ m}^2$ )

### Škola\_prizemlje\_adm\_glavna\_el\_soba / Luminaire parts list

2 Pieces

LED, industrial, body PC with aluminium translucent PC luminaire.  
Article No.: FUTURA 2.5ft PC AI 8000/840  
Luminous flux (Luminaire): 7256 lm  
Luminous flux (Lamps): 7250 lm  
Luminaire Wattage: 53.0 W  
Luminaire classification according to CIE: 93  
CIE flux code: 45 74 92 93 100  
Fitting: 1 x Lamp LED (Correction Factor 1.000).

See our luminaire catalog for an image of the cooler, diffuser





Operator Nova-lux d.o.o.  
Telephone  
Fax e-  
Mail

## Škola\_prizemlje\_adm\_glavna\_el\_soba / Photometric Results

Total 14511  
Luminous lm  
Flux:  
Total 106.0  
Load: W  
Light loss 0.80  
factor:  
Boundary 0.000  
Zone: m

Surface	Average illuminances [lx]		Reflection factor [%]	Average luminance [cd/m²]	
	direct	indirect	total		
Workplane	127	73	200	/	/
Floor	127	73	200	20	13
Ceiling	28	71	99	70	22
Wall 1	103	67	170	50	27
Wall 2	71	66	136	50	22
Wall 3	91	68	159	50	25
Wall 4	77	68	145	50	23
Uniformity on the working plane					
u0: 0.663 (1:2)					
E <sub>min</sub> / E <sub>max</sub> : 0.560 (1:2)					

Illuminance Quotient (according to LG7): Walls / Working Plane: 0.789, Ceiling / Working Plane: 0.495.

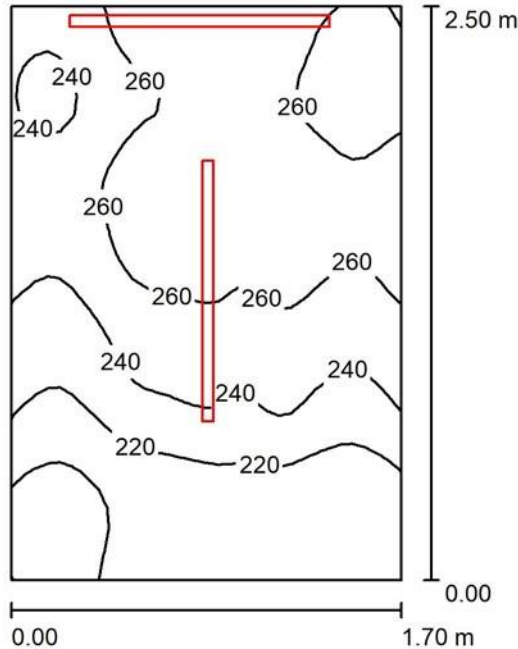
Specific connected load:  $4.04 \text{ W/m}^2 = 2.02 \text{ W/m}^2/100 \text{ lx}$  (Ground area:  $26.24 \text{ m}^2$ )





Operator Nova-lux d.o.o.  
Telephone  
Fax e-  
Mail

## Škola\_prizemlje\_adm\_WC\_inv / Summary



Height of Room: 2.750 m, Mounting Height: 2.750 m, Light loss factor: 0.80

Values in Lux, Scale 1:33

Surface	$\rho$ [%]	$E_{av}$ [lx]	$E_{min}$ [lx]	$E_{max}$ [lx]	$u0$
Workplane	/	242	183	280	0.755
Floor	20	242	181	278	0.749
Ceiling	70	519	98	8801	0.188
Walls (4)	50	371	108	15096	/

### Workplane:

Height: 0.000 m  
Grid: 32 x 32 Points  
Boundary Zone: 0.000 m

Illuminance Quotient (according to LG7): Walls / Working Plane: 1.306, Ceiling / Working Plane: 2.142.

### Luminaire Parts List

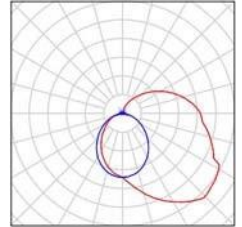
No.	Pieces	Designation (Correction Factor)	$\Phi$ (Luminaire) [lm]	$\Phi$ (Lamps) [lm]	P [W]
1	1	LED 4400LM	3424	4712	32.0
2	1	LED 4400LM	3375	4644	28.0
Total:			6799	9356	60.0

Specific connected load:  $14.12 \text{ W/m}^2 = 5.83 \text{ W/m}^2/100 \text{ lx}$  (Ground area:  $4.25 \text{ m}^2$ )

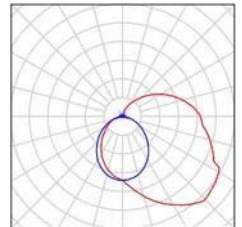
Operator Nova-lux d.o.o.  
 Telephone  
 Fax e-  
 Mail

### Škola\_prizemlje\_adm\_WC\_inv / Luminaire parts list

1 Pieces [REDACTED] See our luminaire catalog  
 [REDACTED] LED 4400LM [REDACTED] for an image of the Article No.: X-  
 [REDACTED] luminaire.  
 Luminous flux (Luminaire): 3424 lm  
 Luminous flux (Lamps): 4712 lm  
 Luminaire Wattage: 32.0 W  
 Luminaire classification according to CIE: 79  
 CIE flux code: 36 65 86 79 73  
 Fitting: [REDACTED] (Correction  
 Factor 1.000).



1 Pieces [REDACTED] See our luminaire catalog  
 [REDACTED] LED 4400LM [REDACTED] for an image of the Article No.: X-  
 [REDACTED] luminaire.  
 Luminous flux (Luminaire): 3375 lm  
 Luminous flux (Lamps): 4644 lm  
 Luminaire Wattage: 28.0 W  
 Luminaire classification according to CIE: 79  
 CIE flux code: 36 65 86 79 73  
 Fitting: [REDACTED] (Correction Factor  
 1.000).



### Škola\_prizemlje\_adm\_WC\_inv / Photometric Results

Total 6799  
 Luminous lm  
 Flux:  
 Total 60.0  
 Load: W  
 Light loss 0.80  
 factor:  
 Boundary 0.000  
 Zone: m

Surface	Average illuminances [lx]			Reflection factor [%]	Average luminance [cd/m²]
	direct	indirect	total		
Workplane	95	147	242	/	/
Floor	95	147	242	20	15
Ceiling	240	279	519	70	116
Wall 1	62	166	228	50	36
Wall 2	196	174	370	50	59
Wall 3	474	212	686	50	109
Wall 4	67	187	254	50	40



Operator Nova-lux d.o.o.  
 Telephone  
 Fax e-  
 Mail

Uniformity on the working plane

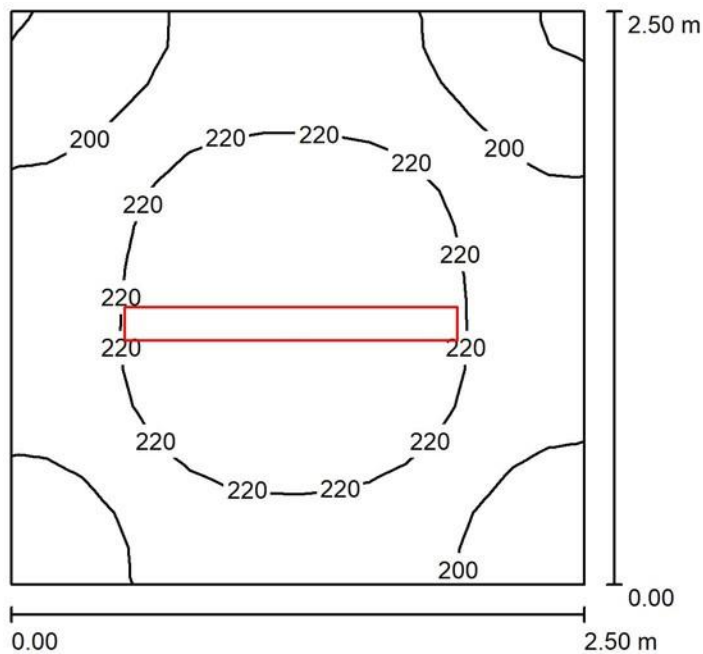
$u_0$ : 0.755 (1:1)

$E_{min} / E_{max}$ : 0.654 (1:2)

Illuminance Quotient (according to LG7): Walls / Working Plane: 1.306, Ceiling / Working Plane: 2.142.

Specific connected load:  $14.12 \text{ W/m}^2 = 5.83 \text{ W/m}^2/100 \text{ lx}$  (Ground area:  $4.25 \text{ m}^2$ )

### Škola\_1kat\_elektro\_soba / Summary



Height of Room: 3.650 m, Mounting Height: 3.650 m, Light loss factor: 0.80

Values in Lux, Scale 1:33

Surface	$\rho$ [%]	$E_{av}$ [lx]	$E_{min}$ [lx]	$E_{max}$ [lx]	$u_0$
Workplane	/	213	176	238	0.829
Floor	20	213	172	238	0.810
Ceiling	70	192	101	676	0.526
Walls (4)	50	239	98	558	/

#### Workplane:

Height: 0.000 m

Grid: 16 x 16 Points

Boundary Zone: 0.000 m

Illuminance Quotient (according to LG7): Walls / Working Plane: 1.125, Ceiling / Working Plane: 0.895.

#### Luminaire Parts List

No.	Pieces	Designation (Correction Factor)	$\Phi$ (Luminaire) [lm]	$\Phi$ (Lamps) [lm]	P [W]
-----	--------	---------------------------------	-------------------------	---------------------	-------





Operator Nova-lux d.o.o.  
Telephone  
Fax e-  
Mail

1	1	LED,industrial,body PC with aluminium cooler,diffuser translucent PC (1.000)	7256	7250	53.0
---	---	--	------	------	------

Total: 7256 Total: 7250 53.0

Specific connected load:  $8.48 \text{ W/m}^2 = 3.99 \text{ W/m}^2/100 \text{ lx}$  (Ground area:  $6.25 \text{ m}^2$ )

### Škola\_1kat\_elektro\_soba / Luminaire parts list

1 Pieces

LED,industrial,body PC with aluminium translucent PC luminaire.

Article No.:

Luminous flux (Luminaire): 7256 lm

Luminous flux (Lamps): 7250 lm

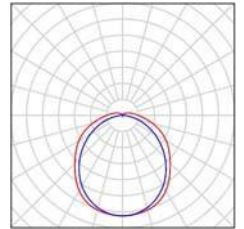
Luminaire Wattage: 53.0 W

Luminaire classification according to CIE: 93

CIE flux code: 45 74 92 93 100

Fitting: (Correction Factor 1.000).

See our luminaire catalog for an image of the cooler,diffuser





Operator Nova-lux d.o.o.  
 Telephone  
 Fax e-  
 Mail

## Škola\_1kat\_elektro\_soba / Photometric Results

Total 7256

Luminous lm

Flux:

Total 53.0

Load: W

Light loss 0.80

factor:

Boundary 0.000

Zone: m

Surface	Average illuminances [lx]		Reflection factor [%]	Average luminance [cd/m²]	
	direct	indirect			

Workplane	117	95	213	/	/
Floor	117	96	213	20	14
Ceiling	59	133	192	70	43
Wall 1	144	110	254	50	40
Wall 2	121	110	232	50	37
Wall 3	124	109	233	50	37
Wall 4	127	111	237	50	38

Uniformity on the working plane

u0: 0.829 (1:1)

E<sub>min</sub> / E<sub>max</sub>: 0.739 (1:1)

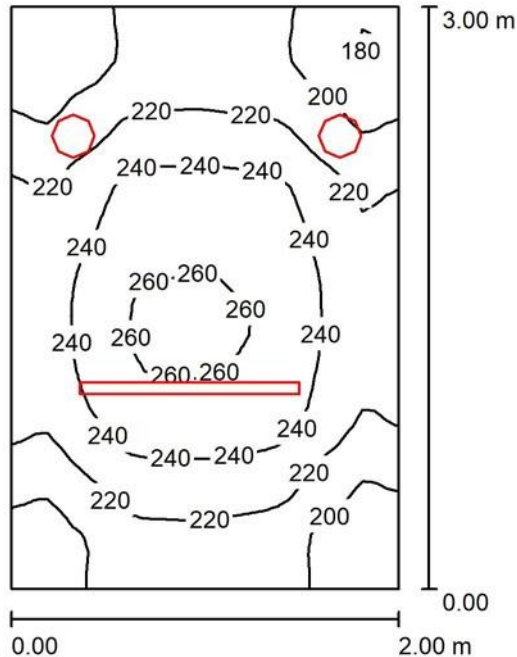
Illuminance Quotient (according to LG7): Walls / Working Plane: 1.125, Ceiling / Working Plane: 0.895.

Specific connected load:  $8.48 \text{ W/m}^2 = 3.99 \text{ W/m}^2/100 \text{ lx}$  (Ground area:  $6.25 \text{ m}^2$ )



Operator Nova-lux d.o.o.  
 Telephone  
 Fax e-  
 Mail

## Škola\_adm\_sanitarije / Summary



Height of Room: 2.750 m, Mounting Height: 2.750 m, Light loss factor: 0.80

Values in Lux, Scale 1:39

Surface	$\square$ [%]	$E_{av}$ [lx]	$E_{min}$ [lx]	$E_{max}$ [lx]	u0
Workplane /	225 175 264 0.780	Floor 20 225 172 263 0.763	Ceiling 70 124 77 302 0.620	Walls (4) 50 219 95 1096 /	

### Workplane:

Height: 0.000 m  
 Grid: 32 x 32 Points  
 Boundary Zone: 0.000 m

Illuminance Quotient (according to LG7): Walls / Working Plane: 0.978, Ceiling / Working Plane: 0.554.

### Luminaire Parts List

No.	Pieces	Designation (Correction Factor)	$\square$ (Luminaire) [lm]	$\square$ (Lamps) [lm]	P [W]
1	2	1200LM 840 (1.000)	1138	1667	13.2
2	1	3141 4712 32.0 4400LM (1.000)			
			Total: 5416	Total: 8046	58.4

Specific connected load:  $9.73 \text{ W/m}^2 = 4.33 \text{ W/m}^2/100 \text{ lx}$  (Ground area:  $6.00 \text{ m}^2$ )



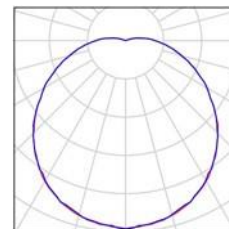
Operator Nova-lux d.o.o.  
Telephone  
Fax e-  
Mail

## Škola\_adm\_sanitarije / Luminaire parts list

2 Pieces

████████████████████  
████████████████████ LED 1200LM E IP54 ██████████

See our luminaire catalog  
for an image of the  
luminaire.

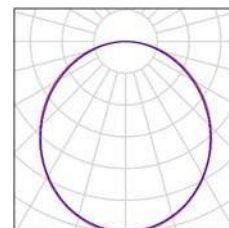


Article No.: ██████████  
Luminous flux (Luminaire): 1138 lm  
Luminous flux (Lamps): 1667 lm  
Luminaire Wattage: 13.2 W  
Luminaire classification according to CIE: 96  
CIE flux code: 41 70 89 96 68  
Fitting: 1 x LED (Correction Factor 1.000).

1 Pieces

████████████████████  
4400LM ██████████

See our luminaire catalog  
for an image of the  
luminaire.



Article No.: ██████████  
Luminous flux (Luminaire): 3141 lm  
Luminous flux (Lamps): 4712 lm  
Luminaire Wattage: 32.0 W  
Luminaire classification according to CIE: 100  
CIE flux code: 47 78 95 100 67  
Fitting: ██████████ (Correction  
Factor 1.000).





Operator Nova-lux d.o.o.  
 Telephone  
 Fax e-  
 Mail

## Škola\_adm\_sanitarije / Photometric Results

Total 5416  
 Luminous lm  
 Flux:  
 Total Load: 58.4 W  
 Light loss 0.80  
 factor:

Boundary 0.000  
 Zone: m

Surface	Average illuminances [lx]			Reflection factor [%]	Average luminance [cd/m²]
	direct	indirect	total		

Workplane	135	89	225	/	/
Floor	135	89	225	20	14
Ceiling	9.75	114	124	70	28
Wall 1	112	89	201	50	32
Wall 2	130	94	223	50	36
Wall 3	117	97	213	50	34
Wall 4	138	93	231	50	37

Uniformity on the working plane

u0: 0.780 (1:1)

E<sub>min</sub> / E<sub>max</sub>: 0.664 (1:2)

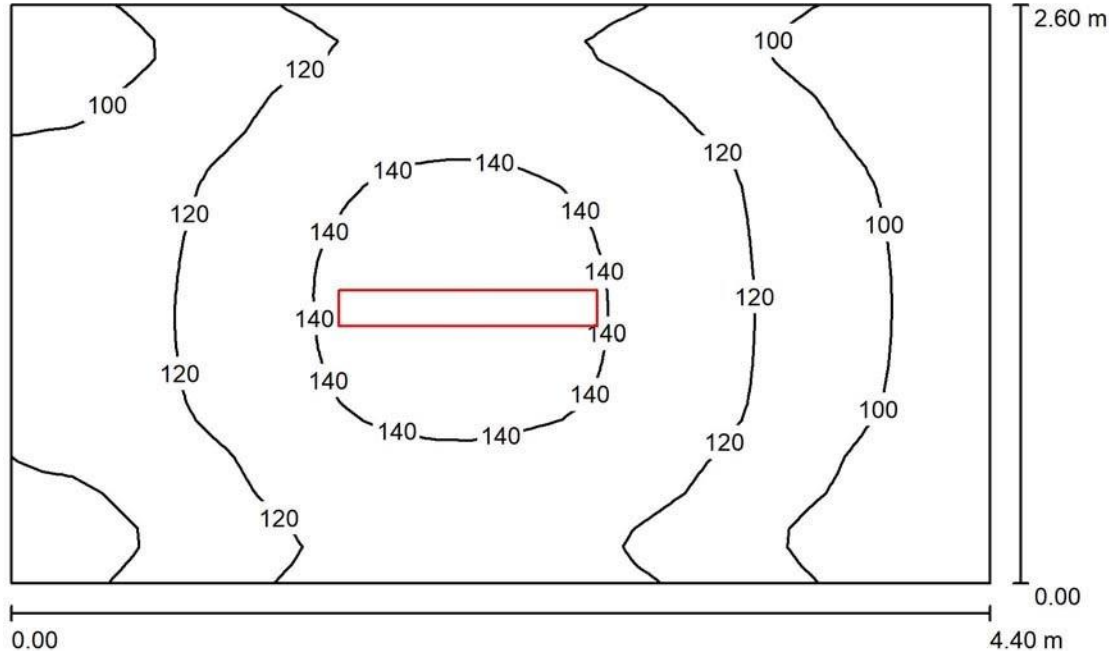
Illuminance Quotient (according to LG7): Walls / Working Plane: 0.978, Ceiling / Working Plane: 0.554.

Specific connected load:  $9.73 \text{ W/m}^2 = 4.33 \text{ W/m}^2/100 \text{ lx}$  (Ground area:  $6.00 \text{ m}^2$ )



Operator Nova-lux d.o.o.  
 Telephone  
 Fax e-  
 Mail

### Škola\_1kat\_spremište\_opreme\_ozv / Summary



Height of Room: 3.500 m, Mounting Height: 3.500 m, Light loss factor: 0.80

Values in Lux, Scale 1:34

Surface	$\rho$ [%]	$E_{av}$ [lx]	$E_{min}$ [lx]	$E_{max}$ [lx]	$u0$
Workplane	/	118	81	148	0.691
Floor	20	118	82	148	0.699
Ceiling	70	105	36	1934	0.344
Walls (4)	50	111	49	326	/

#### Workplane:

Height: 0.000 m  
 Grid: 32 x 32 Points  
 Boundary Zone: 0.000 m

Illuminance Quotient (according to LG7): Walls / Working Plane: 0.941, Ceiling / Working Plane: 0.874.

#### Luminaire Parts List

No.	Pieces	Designation (Correction Factor)	$\Phi$ (Luminaire) [lm]	$\Phi$ (Lamps) [lm]	P [W]
1	1	surface mounted (1.000)	5209	5210	42.0
Total: 5209			Total: 5210	Total: 5210	42.0

Specific connected load:  $3.67 \text{ W/m}^2 = 3.12 \text{ W/m}^2/100 \text{ lx}$  (Ground area:  $11.44 \text{ m}^2$ )



Operator Nova-lux d.o.o.  
Telephone  
Fax e-  
Mail

## Škola\_1kat\_spremište\_opreme\_ozv / Luminaire parts list

1 Pieces

[REDACTED],

surface mounted

Article No.: [REDACTED]

Luminous flux (Luminaire): 5209 lm

Luminous flux (Lamps): 5210 lm

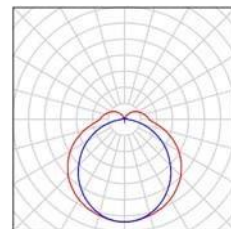
Luminaire Wattage: 42.0 W

Luminaire classification according to CIE: 86

CIE flux code: 40 70 90 86 100

Fitting: [REDACTED] (Correction Factor 1.000).

See our luminaire catalog  
for an image of the  
luminaire.





Operator Nova-lux d.o.o.  
 Telephone  
 Fax e-  
 Mail

## Škola\_1kat\_spremište\_opreme\_ozv / Photometric Results

Total 5209

Luminous lm

Flux:

Total 42.0

Load: W

Light loss 0.80

factor:

Boundary 0.000

Zone: m

Surface	Average illuminances [lx]		Reflection factor [%]	Average luminance [cd/m²]	
	direct	indirect			

Workplane	64	54	118	/	/
Floor	64	54	118	20	7.50
Ceiling	50	55	105	70	23
Wall 1	71	53	124	50	20
Wall 2	38	49	86	50	14
Wall 3	67	53	120	50	19
Wall 4	46	52	98	50	16

Uniformity on the working plane

u0: 0.691 (1:1)

E<sub>min</sub> / E<sub>max</sub>: 0.550 (1:2)

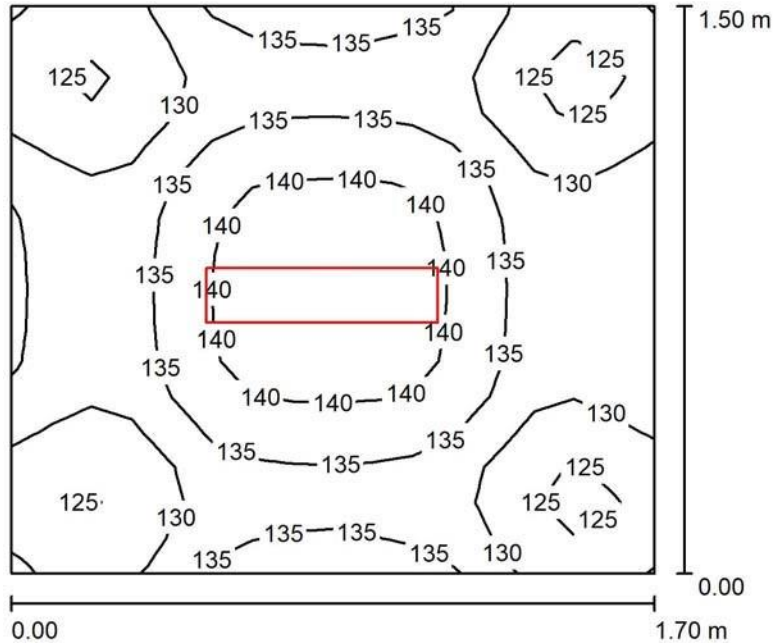
Illuminance Quotient (according to LG7): Walls / Working Plane: 0.941, Ceiling / Working Plane: 0.874.

Specific connected load:  $3.67 \text{ W/m}^2 = 3.12 \text{ W/m}^2/100 \text{ lx}$  (Ground area:  $11.44 \text{ m}^2$ )



Operator Nova-lux d.o.o.  
 Telephone  
 Fax e-  
 Mail

## Škola\_adm\_cb / Summary



Height of Room: 3.650 m, Mounting Height: 3.650 m, Light loss factor: 0.80

Values in Lux, Scale 1:20

Surface	$\rho$ [%]	$E_{av}$ [lx]	$E_{min}$ [lx]	$E_{max}$ [lx]	$u_0$
Workplane	/	133	121	142	0.912
Floor	20	133	122	142	0.917
Ceiling	70	232	123	690	0.530
Walls (4)	50	229	55	710	/

**Workplane:**

Height: 0.000 m  
 Grid: 16 x 16 Points  
 Boundary Zone: 0.000 m

Illuminance Quotient (according to LG7): Walls / Working Plane: 1.710, Ceiling / Working Plane: 1.743.

**Luminaire Parts List**

No.	Pieces	Designation (Correction Factor)	$\Phi$ (Luminaire) [lm]	$\Phi$ (Lamps) [lm]	P [W]
1	1	LED, industrial, body PC with aluminium cooler, diffuser translucent PC (1.000)	3918	3920	30.0
Total:			3918	3920	30.0

Specific connected load:  $11.76 \text{ W/m}^2 = 8.84 \text{ W/m}^2/100 \text{ lx}$  (Ground area:  $2.55 \text{ m}^2$ )

1 Pieces	LED, industrial, body PC with aluminium cooler, diffuser translucent PC Article No.: Luminous flux (Luminaire): 3918 lm	Luminous flux (Lamps): 3920 lm Luminaire Wattage: 30.0 W Luminaire classification according to CIE: 94 CIE flux code: 45 74 92 94 100
----------	--	---

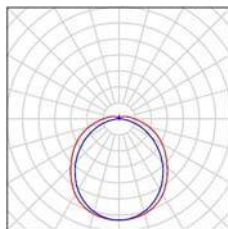


Operator Nova-lux d.o.o.  
Telephone  
Fax e-  
Mail

Fitting: 1 x LEDLine (Correction Factor 1.000).

## Škola\_adm\_cb / Luminaire parts list

See our luminaire catalog for  
image of the luminaire.



an



## Škola\_adm\_cb / Photometric Results

Total 3918

Luminous lm

Flux:

Total 30.0

Load: W

Light loss 0.80

factor:

Boundary 0.000

Zone: m

Surface	Average illuminances [lx]		Reflection factor [%]	Average luminance [cd/m²]	
	direct	indirect			

Workplane	71	62	133	/	/
-----------	----	----	-----	---	---

Floor	71	62	133	20	8.47
-------	----	----	-----	----	------

Ceiling	65	167	232	70	52
---------	----	-----	-----	----	----

Wall 1	130	109	239	50	38
--------	-----	-----	-----	----	----

Wall 2	106	109	215	50	34
--------	-----	-----	-----	----	----

Wall 3	127	109	236	50	38
--------	-----	-----	-----	----	----

Wall 4	112	110	222	50	35
--------	-----	-----	-----	----	----

Uniformity on the working plane

u0: 0.912 (1:1)

E<sub>min</sub> / E<sub>max</sub>: 0.854 (1:1)

Illuminance Quotient (according to LG7): Walls / Working Plane: 1.710, Ceiling / Working Plane: 1.743.

Specific connected load: 11.76 W/m² = 8.84 W/m²/100 lx (Ground area: 2.55 m²)